

PIKE PARKING GARAGE, VILLANOVA UNIVERSITY, VILLANOVA, PA

A+ IN ON-CAMPUS PARKING

This five-level 1,300 space parking garage is part of the Lancaster Avenue Housing project at Villanova University. The University intends to create residential housing for approximately 1,160 undergraduate students on its current main parking lots along Route 30/Lancaster Avenue. In addition to the student housing buildings, the proposed plans include this multi-level precast, open parking garage, a new University bookstore, and a Performing Arts Center. The parking spaces of the existing surface lots were consolidated into this parking structure, freeing up land area for the other project buildings.

The garage is an open, long-span, precast structure consisting of architectural wall panels, columns, double tees, light walls, flat slabs and inverted tee girders. The perimeter wall panels are a colored and sandblasted architectural precast with a field installed stone veneer. The garage foundation system is comprised of 40 foot deep caissons and grade beams. The ground floor of the garage is recessed into the sloping site to minimize the perceived mass of the garage as well as comply with local zoning height restrictions. This partial below grade level required a retaining wall around a substantial portion of the garage perimeter.

The garage provides long-term student parking on the upper levels and transient parking on the lower levels for visitors and staff. The garage is also be utilized for event parking during various athletic events as well as other peak events such as graduation and homecoming. There are multiple entry and exit lanes provided to allow for ease of access and exiting with the local street network.

Services

Structural Engineering
Parking Planning & Design

Structural Systems Used

Precast Concrete

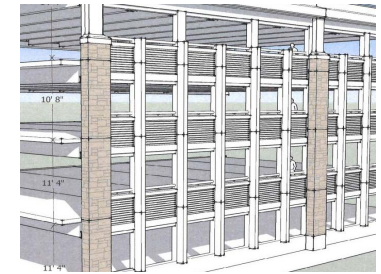
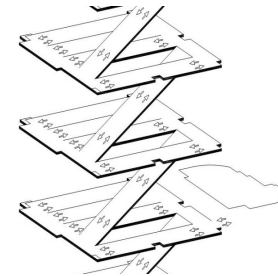
CONTACT US

Susanne Hanson

Director of Business Development

O: 610.337.3360

D: 610.368.4889



The Harman Group, Inc.

Structural Engineering | Parking Planning and Design |

Construction Engineering

PHILADELPHIA | NEW YORK

www.HarmanGroup.com

We listen. We respond. We deliver.